

**X-304** 6A22.69  
S3 SRC ESD

**HYPERCLEAN**  
LINE | X-3

SIZES 36 - 48

**ANTIBACTERIAL  
MICROFIBER**

Innovative material made of polyester fibers, water resistant and highly durable. Allows natural breathing.

**FLEXIBLE  
ADJUSTMENT**

To improve the fit and comfort.

**ALUMINIUM TOE CAP**

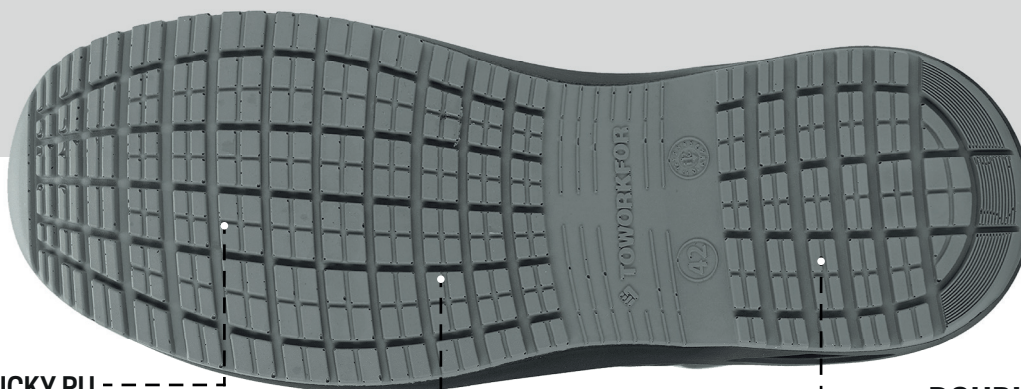
Lightweight toe cap able to resist against pressure up to 200 Joules. Rubber coating for extra protection and easy cleaning.

**FLOAT**

The high tenacity fabrics for zero perforation give strong flexibility and lightness.

**CARBON PRO**

Best conductive foam for maximum performance with lighter and high impulse properties.



**HARD STICKY PU**

Strategically positioned in the areas of most wear, to increase durability.

**CLEATS**

Open cleats for a better fluid dispersion.

**DOUBLE DENSITY  
PU SOLE**

This sole blends two different PU densities, where the midsole is extremely soft and comfortable, while the hard PU outsole provides great grip and resistance to oil and abrasion.



ALUMINIUM TOE CAP



FLOAT INSOLE



RESISTANCE TO WATER ABSORPTION



ELETROSTATIC DISCHARGE

**NORMS EN ISO 20345:2011**

**S3** - Closed heel area with the following characteristics:

- E** - Heel energy absorption
- A** - Antistatic footwear
- FO** - Resistance to fuel oil of the outsole
- P** - Penetration resistance sole
- WRU** - Water penetration resistant uppers

**ADDITIONAL CHARACTERISTICS:**

- SRC** - Slip resistance on ceramic + sodium lauryl sulfate and steel + glycerin
- ESD** - Electrostatic Discharge (EN 61340-5-1)

**ADVANTAGES**

- Light | Comfortable | Breathable | Versatile | Sporty Look |
- Excellent anti-slip characteristics | Water absorption resistant materials

**WORKING ENVIRONMENT**

- Food Industry | Hotel Industry | Restaurants | Cleaning Industry