

**X-505** 6B25.70  
**S3 SRC ESD**

**DYNAMIC**  
LINE | X-5

SIZES 36 - 48



**X-BALANCE PRO**

The precise foothold for stability.

**SMOOSH**  
REBOUND LAYER

360° system designed to absorb shock in the heel.

**NUBUCK VEGAN**

Soft treated leather, very breathable that significantly increases the level of comfort. Excellent resistance and durability.

**ALUMINIUM TOE CAP**

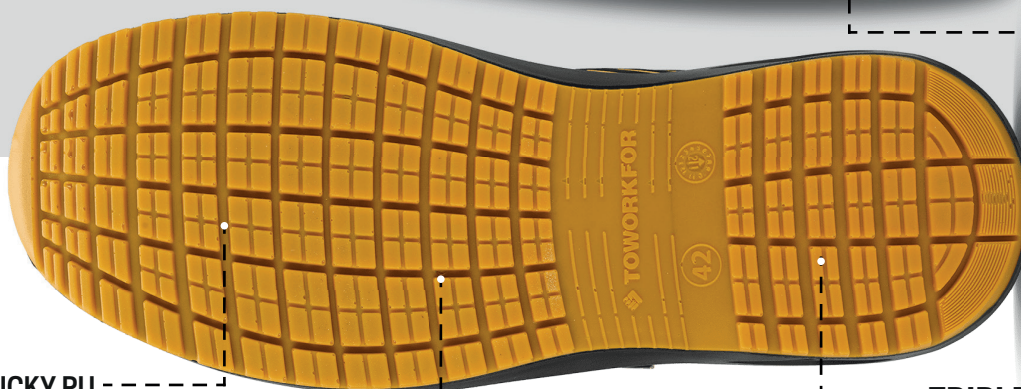
Lightweight toe cap able to resist against pressure up to 200 Joules. Rubber coating for extra protection and easy cleaning.

**CARBON PRO**

Best conductive foam for maximum performance with lighter and high impulse properties.

**FLOAT**

The high tenacity fabrics for zero perforation give strong flexibility and lightness.



**HARD STICKY PU**

Strategically positioned in the areas of most wear, to increase durability.

**CLEATS**

Open cleats for a better fluid dispersion.

**TRIPLE DENSITY PU SOLE**

Extremely soft and comfortable PU midsole in combination with hard PU outsole which provides great grip.



ALUMINIUM TOE CAP



FLOAT INSOLE



RESISTANCE TO WATER ABSORPTION



ELETROSTATIC DISCHARGE



SMOOSH REBOUND LAYER

X-BALANCE PRO

**NORMS EN ISO 20345:2011**

**S3** - Closed heel area with the following characteristics:

- E** - Heel energy absorption
- A** - Antistatic footwear
- FO** - Resistance to fuel oil of the outsole
- P** - Penetration resistance sole
- WRU** - Water penetration resistant uppers

**ADDITIONAL CHARACTERISTICS:**

- SRC** - Slip resistance on ceramic + sodium lauryl sulfate and steel + glycerin
- ESD** - Electrostatic Discharge (EN 61340-5-1)

**ADVANTAGES**

- Light | Comfortable | Breathable | Versatile | Sporty Look |
- Excellent anti-slip characteristics | Water absorption resistant materials

**WORKING ENVIRONMENT**

- Outdoor Jobs | Logistics | Administrative | Shopkeeper |
- Warehouse