

X-N2 8A01.80
S3 SRC HRO

PAG. 1/2
SIZES 35 - 48

X-HEEL SUPPORT
Super stability and flexibility for the foot

POROMAX LINING
Removes hot moist air and facilitates uniform temperature inside the shoe.

ARBOL HYDRO FABRIC MATERIAL
Water resistant breathable and highly durable materials. Arbol hydro Fabric has a reflectice technology.

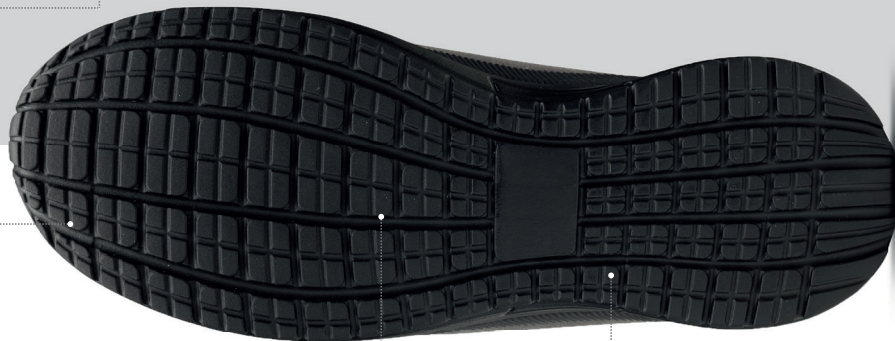
ALUMINIUM TOE CAP
Lightweight toe cap against pressure up to 200 joules.



BIORELAX INSOCK
Total recovery insock with carbon filter to reduce odour.

Q-FLEX INSOLE
Anti-perforation, non-metallic and anti-static insole.

SELF-CLEAN SYSTEM
Designed to keep the outsole safer and cleaner



ANTI-SLIP TREAD
For excellent adherence on all types of slippery floor surfaces.

SAFELIGHT EVA SAFETY SOLE
Smooth, lightweight with excellent anti-slip and heat resistance features.



ALUMINIUM TOE CAP



Q-FLEX INSOLE



RESISTANCE TO WATER ABSORPTION

NORMS EN ISO 20345:2011

- S3** - Closed heel area with the following characteristics:
- A** - Antistatic footwear
 - E** - Heel energy absorption
 - FO** - Resistance to fuel oil of the outsole
 - P** - Penetration resistance sole
 - WRU** - Water penetration resistant uppers

ADDITIONAL CHARACTERISTICS:

- SRC** - Slip resistance on ceramic + sodium lauryl sulfate and steel + glycerin
- HRO** - Resistance to hot contact of the outsole

ADVANTAGES

- Breathable | Comfortable | Excellent anti-slip features | Water-resistant materials | Lightweight

WORKING ENVIRONMENT

- LOGISTICS WORK | ADMINISTRATIVE | TRANSPORT | SHOPKEEPER | INDOOR JOBS

X-N2 8A01.80
S3 SRC HRO



PAG. 2/2
CERTIFICATION NUMBER

LIGHT
AS A FEATHER
THE LIGHTEST SAFETY SHOES

TECHNICAL INFORMATION

MATERIALS	STANDARDS	DESCRIPTION	UN.	RESULTS	REQ. EN ISO 20345:2011
UPPER - ARBOL HYDRO FABRIC - Water resistant breathable and highly durable materials. Arbol hydro Fabric has a reflective technology.	6.6+6.8	WATER VAPOUR PERMEABILITY	mg/cm ²	24,7	min. 0,8
		COEFFICIENT OF PERMEABILITY	mg/cm ²	598	min. 15
	6.3	TEARING STRENGTH	N	142	min. 60
	6.1.3	TRANSMITED WATER AFTER 60 MIN	g	0,0	max. 0,2
		ABSORBED WATER 60 MIN	%	5,1	max. 30
UPPER LINING - POROMAX - Innovative technology due to the structure of the internal chambers that removes hot and moist air from the top of the shoe and facilitates the uniform distribution of temperature inside the shoes.	6.6+6.8	WATER VAPOUR PERMEABILITY	mg/cm ²	60,5	min. 2,0
		COEFFICIENT OF PERMEABILITY	mg/cm ²	484,1	min. 2,0
	6.3	TEARING STRENGTH	N	29	min. 15
HEEL LINING - CAMBRELLE - Offer a combination of abrasion resistance and moisture management to keep feet cool, dry, and comfortable even in extreme conditions.	5.5.1	TEARING STRENGTH	N	18	min. 15
	6.1.2	ABRASION RESISTANCE (DRY)	-	approved	51.200
		ABRASION RESISTANCE (WET)	-	approved	25.600
INSOLE Q-FLEX - Anti-perforation, non-metallic and anti-static insole.	6.2.1.1	PERFORATION RESISTANCE	N	approved	no perforation
INSOCK BIORELAX - Anti-fatigue, antibacterial and 100% breathable	5.5.2	ABRASION RESISTANCE (DRY)	cycles	approved	25.600
		ABRASION RESISTANCE (WET)	cycles	approved	12.800
	7.2	WATER DESORPTION	%	-	min 80
		WATER ABSORPTION	mg/cm ²	-	min 70
SOLE SAFELIGHT EVA SAFETY - Smooth, lightweight with excellent anti-slip and heat resistance features.	8.2	TEARING STRENGTH	N/mm	5,2	min. 5
	8.3	ABRASION RESISTANCE	mm ³	224	max. 250
	8.4	BENDING RESISTANCE	mm	0,0	max. 4
	8.6	OIL RESISTANCE	%	6,7	max 12
		VOLUME VARIATION			
		OIL RESISTANCE INCREASED TOUGHNESS	Shore A	<10	max 10
FULL SHOE	5.1.1	SLIP RESISTANCE IN CERAMIC WITH WATER AND DETERGENT	flat heel	0,45 0,41	min. 0,32 min. 0,28
		SLIP RESISTANCE IN STAINLESS WITH GLYCERINE	flat heel	0,21 0,18	min. 0,18 min. 0,13
	5.4	IMPACT RESISTANCE	mm	19,5	min. 14,5
	5.5	COMPRESSE STRENGTH	mm	21,5	min. 15
	5.1.4	SHOCK ABSORPTION (HEEL)	J	75	min. 20
	5.2	ADHESION STRENGTH SOLE/CUT	N/mm	9,7	min. 4,0

SHOE WEIGHT (SIZE 42): 510g